

THE SNIVERS PROJECT

SOUTHERN HEMISPHERE INFLUENZA AND VACCINE EFFECTIVENESS RESEARCH & SURVEILLANCE

INFLUENZA STUDY

Auckland – 2015

COLLECTION CENTRE INFORMATION

Please remember to take the Laboratory Specimen Request Form to the collection centre

For convenience, participants can visit any one of the collection centres listed to have their blood samples taken.

Most centres are open from 7am to improve access outside work/school hours.

Participants will have a small blood sample taken when the study starts and again at the end of winter. For younger children a finger prick or heel prick may be taken. The blood samples are tested to see how many people have developed immunity to the flu by developing antibodies.

Auckland South Collection Centres		
Collection Centre	Address	Opening Hours
Otara	Shop 6, Otara Town Centre, 120 East Tamaki Road, Otara, 2023	WEEKDAYS: 7.00am – 3.45pm
Pakuranga	17 William Roberts Road (enter from Reeves Road), Pakuranga, 2010	WEEKDAYS: 7.00am – 4.00pm
Papakura	132A Great South Road, Papakura, 2110	WEEKDAYS: 7.00am – 5.45pm
Papatoetoe	119 Kolmar Road, Papatoetoe, 2025	WEEKDAYS: 7.00am – 5.45pm
Pukekohe	10 West Street, Pukekohe, 2120	WEEKDAYS: 7.00am – 4.45pm
Waiuku	30 Constable Road, Waiuku, 2123	WEEKDAYS: 7.00am – 2.45pm

Contacts

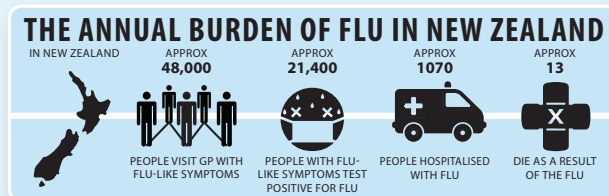
If study participants have any queries or concerns about their rights as a participant in this study, they may wish to contact an independent Health and Disability Advocate for free advice. Freephone 0800 555 050.

They are also welcome to contact the researchers if they have any questions about this study.

Contact: Barbara McArdle
Conectus, The University of Auckland
Telephone 09 923 4769

Environmental Science & Research
<http://www.esr.cri.nz>

This study has received ethical approval from the Northern A Health and Disability Ethics Committee, under reference NTX11.11.102. AM13



THE SNIVERS PROJECT

SOUTHERN HEMISPHERE INFLUENZA AND VACCINE EFFECTIVENESS RESEARCH & SURVEILLANCE

Please remember to take the Laboratory Specimen Request Form to the collection centre

Auckland City & East Collection Centres		
Collection Centre	Address	Opening Hours
Ascot Hospital	90 Greenlane Rd, Greenlane, 1050	WEEKDAYS: 7.30am – 5.00pm
Avondale	57 Rosebank Road, Avondale, 1026	WEEKDAYS: 7.00am – 3.45pm
Blockhouse Bay	Blockhouse Bay Medical Centre, 3 Heaphy Street, Blockhouse Bay, 0600	WEEKDAYS: 7.00am – 4.45pm 8.00am – 12.00pm
City – Quay West	Cnr Albert St and Mills Lane, Auckland CBD, 1010	WEEKDAYS: 8.00am – 5.30pm
City – Queen Street	Level 2, 280 Queen Street, Auckland CBD, 1010	WEEKDAYS: 7.00am – 4.45pm
Glen Innes	161 Line Road, Glen Innes, 1072	WEEKDAYS: 7.00am – 3.45pm
Greenlane	Greenwood Medical Centre, 641 Manukau Road, Greenlane, 1023	WEEKDAYS: 7.00am – 4.45pm
Grey Lynn	58 Brown Street, Grey Lynn, 1021	WEEKDAYS: 7.00am – 4.15pm SATURDAYS: 8.00am – 12.00pm
Meadowbank	24, Meadowbank Shopping Centre, 35 St Johns Road, Meadowbank, 1072	WEEKDAYS: 7.00am – 3.45pm
Mercy Hospital	98 Mountain Rd, Epsom, 1023	WEEKDAYS: 8.00am – 5.00pm
Mt Eden	655 Dominion Road, Mt Eden, 1041	WEEKDAYS: 7.00am – 5.45pm
Mt Eden Medical Centre	457 Mt Eden Road, Corner Grange Road, Auckland	MONDAY–THURSDAY 10.30am – 4.00pm <i>Blood collection not available for 0–13 year olds</i>

Auckland City & East Collection Centres		
Collection Centre	Address	Opening Hours
Mt Roskill	223 Stoddard Road, Mt Roskill, 1041	WEEKDAYS: 7.00am – 4.45pm
Mt Wellington	37 – 41 Carbine Road, Mt Wellington, 1060	WEEKDAYS: 7.00am – 4.45pm
Onehunga	Onehunga Medical Centre, 73 Church Street, Onehunga, 1061	WEEKDAYS: 7.00am – 4.45pm
Otahuhu	11 Mason Avenue, Otahuhu, 1062	WEEKDAYS: 7.00am – 3.45pm
Panmure	Panmure Medical Centre, 204 Queens Road, Panmure, 1072	WEEKDAYS: 7.00am – 3.45pm
Ponsonby	All Saints Plaza, Cnr Ponsonby Rd and Ponsonby Terrace, 1011	WEEKDAYS: 7.00am – 4.00pm
Pt Chevalier	1194 – 1196 Great North Road, Pt Chevalier, 1022	WEEKDAYS: 7.00am – 3.45pm
Remuera	Level 1, 122 Remuera Road	WEEKDAYS: 7.00am – 5.00pm
St Heliers	Eastmed Medical Centre, 188 St Heliers Bay Road, St Heliers, 1071	WEEKDAYS: 7.00am – 4.45pm
Waiheke Island	143 Ocean View Road, Oneroa, Waiheke Island, 1081	WEEKDAYS: 7.00am – 2.00pm

Auckland South Collection Centres		
Collection Centre	Address	Opening Hours
Botany Super Centre	260 Botany Road, Botany, 2013	WEEKDAYS: 7.00am – 5.45pm
Chapel Downs	124 Dawson Road, Chapel Downs, Auckland, 2023	WEEKDAYS: 7.00am – 4.15pm
Clendon	Clendon Medical Centre 15 Palmers Road, Clendon, 2103	WEEKDAYS: 7.00am – 3.45pm
Howick	Corner Fencible Drive and 46 Wellington Street, Howick, 2014	WEEKDAYS: 7.00am – 5.45pm
Mangere	12 Waddon Place (access is not available from Cape Road), Mangere, 2022	WEEKDAYS: 7.00am – 4.45pm
Manukau	18 Manukau Station Road (Previously Wiri Station Road), Manukau, 2104	WEEKDAYS: 7.00am – 5.45pm
Manurewa	161 Great South Road, Manurewa, 2102	WEEKDAYS: 7.00am – 5.45pm
Bairds Road Accident & Medical Centre	<i>ETHC patients only</i> 160 Bairds Road, Otara, Manukau, 2023	MONDAY–THURSDAY 8.00am – 4.00pm <i>Blood collection not available for 0–15 year olds</i>
Dannemora Medical Centre	<i>ETHC patients only</i> 1 – 3 Redcastle Drive, Dannemora, Manukau, 2013	MONDAY–THURSDAY 8.00am – 4.00pm <i>Blood collection not available for 0–15 year olds</i>